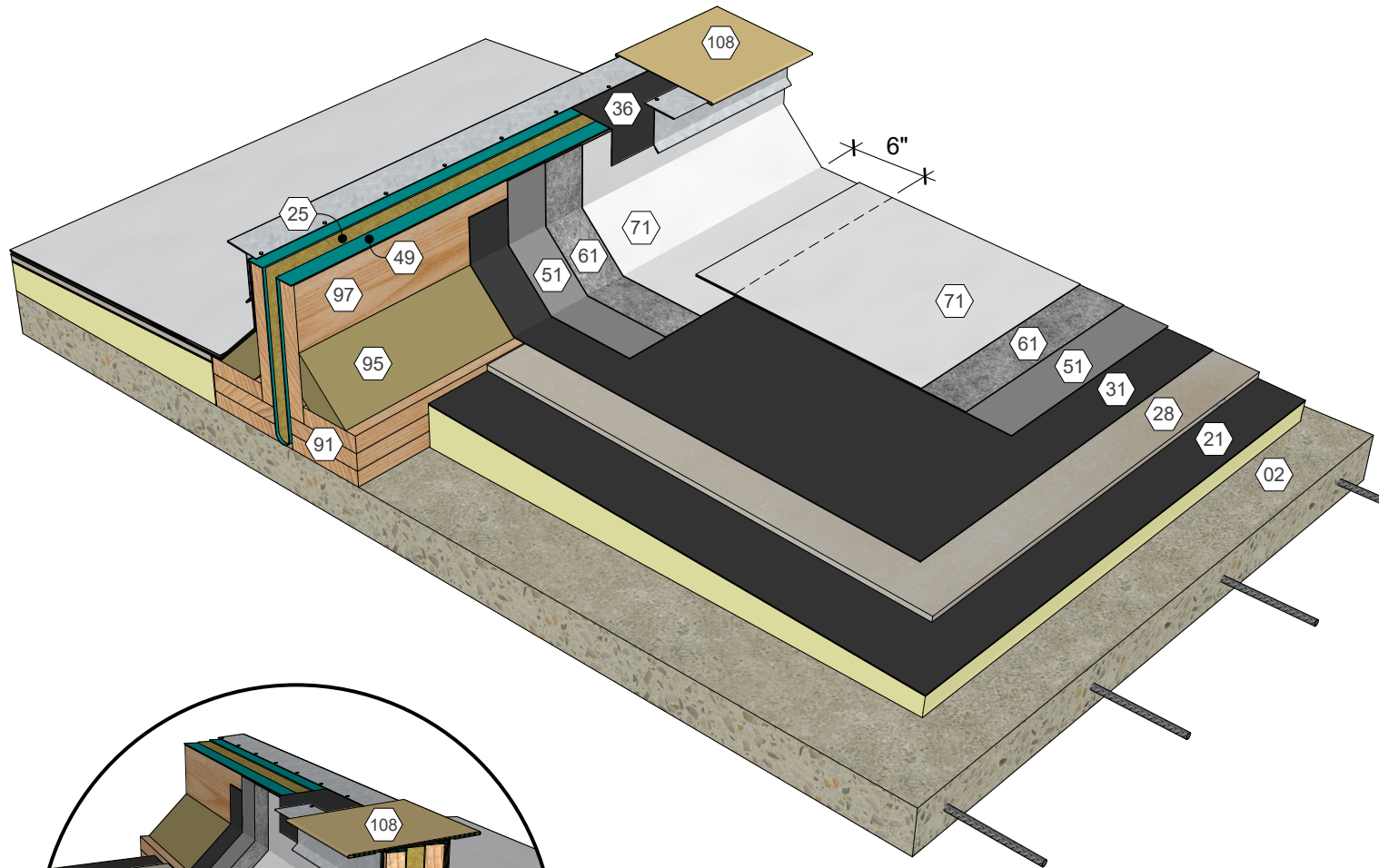


## KEY NOTES

- 01 Metal Deck
- 09 Roof Structure
- 22 Polyisocyanurate Insulation (Fastened or Adhered)
- 25 Compressible Insulation
- 28 Cover Board (Adhered)
- 31 Approved Base Ply Sheet
- 36 Base Sheet Liner
- 49 Flexible Vapor Retarder Serving as Insulation Retainer
- 51 AlphaGuard MT/MTS Base Coat
- 61 AlphaGuard Glass Mat or Permafab
- 71 AlphaGuard MT/MTS Top Coat
- 91 Wood Blocking
- 95 Cant Strip
- 97 Wood Curb Assembly, Slope to One Side
- 108 Sheet Metal Expansion Joint Cover

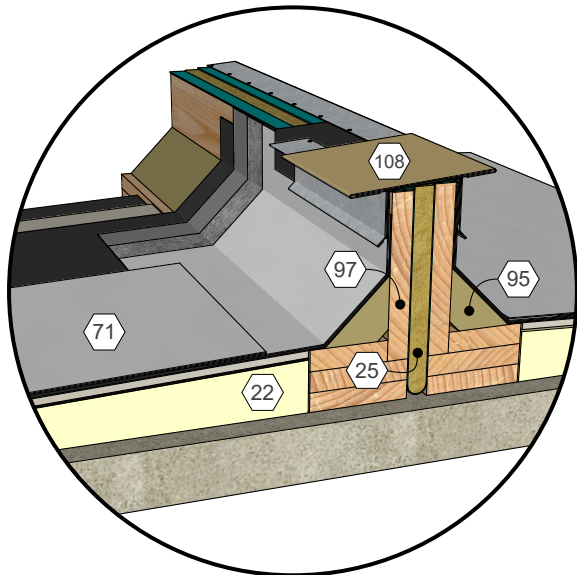
AlphaGuard® MT/MTS Plus Expansion Joint Detail, Metal Deck  
Detail 22081

**TREMCO**  
ROOFING & BUILDING MAINTENANCE

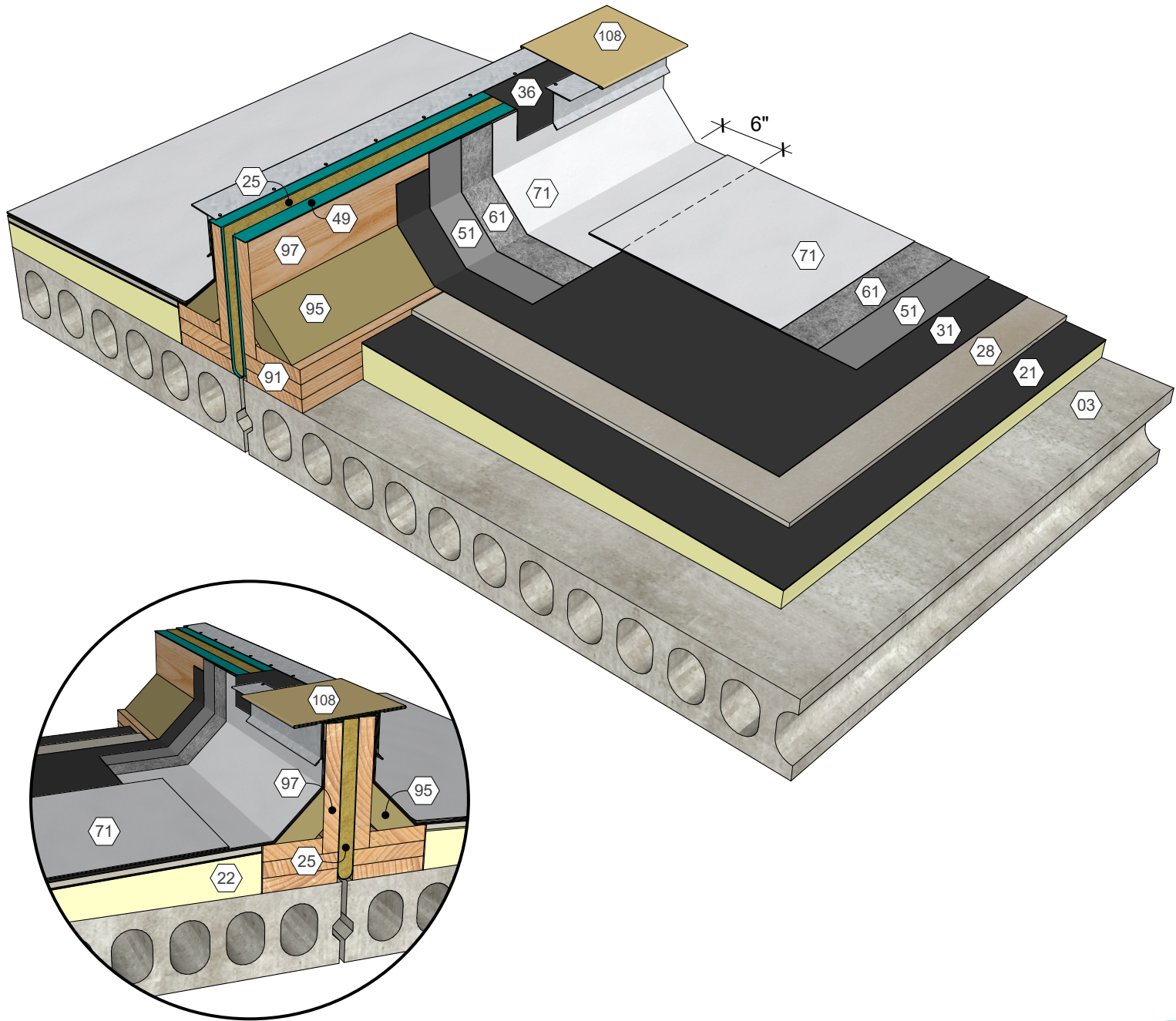


### KEY NOTES

- 02 Structural Concrete Deck
- 21 Polyisocyanurate Insulation (Adhered)
- 25 Compressible Insulation
- 28 Cover Board (Adhered)
- 31 Approved Base Ply Sheet
- 36 Base Sheet Liner
- 49 Flexible Vapor Retarder Serving as Insulation Retainer
- 51 AlphaGuard MT/MTS Base Coat
- 61 AlphaGuard Glass Mat or Permafab
- 71 AlphaGuard MT/MTS Top Coat
- 91 Wood Blocking
- 95 Cant Strip
- 97 Wood Curb Assembly, Slope to One Side
- 108 Sheet Metal Expansion Joint Cover



AlphaGuard® MT/MTS Plus Expansion Joint Detail, Structural Concrete Deck  
Detail 22082

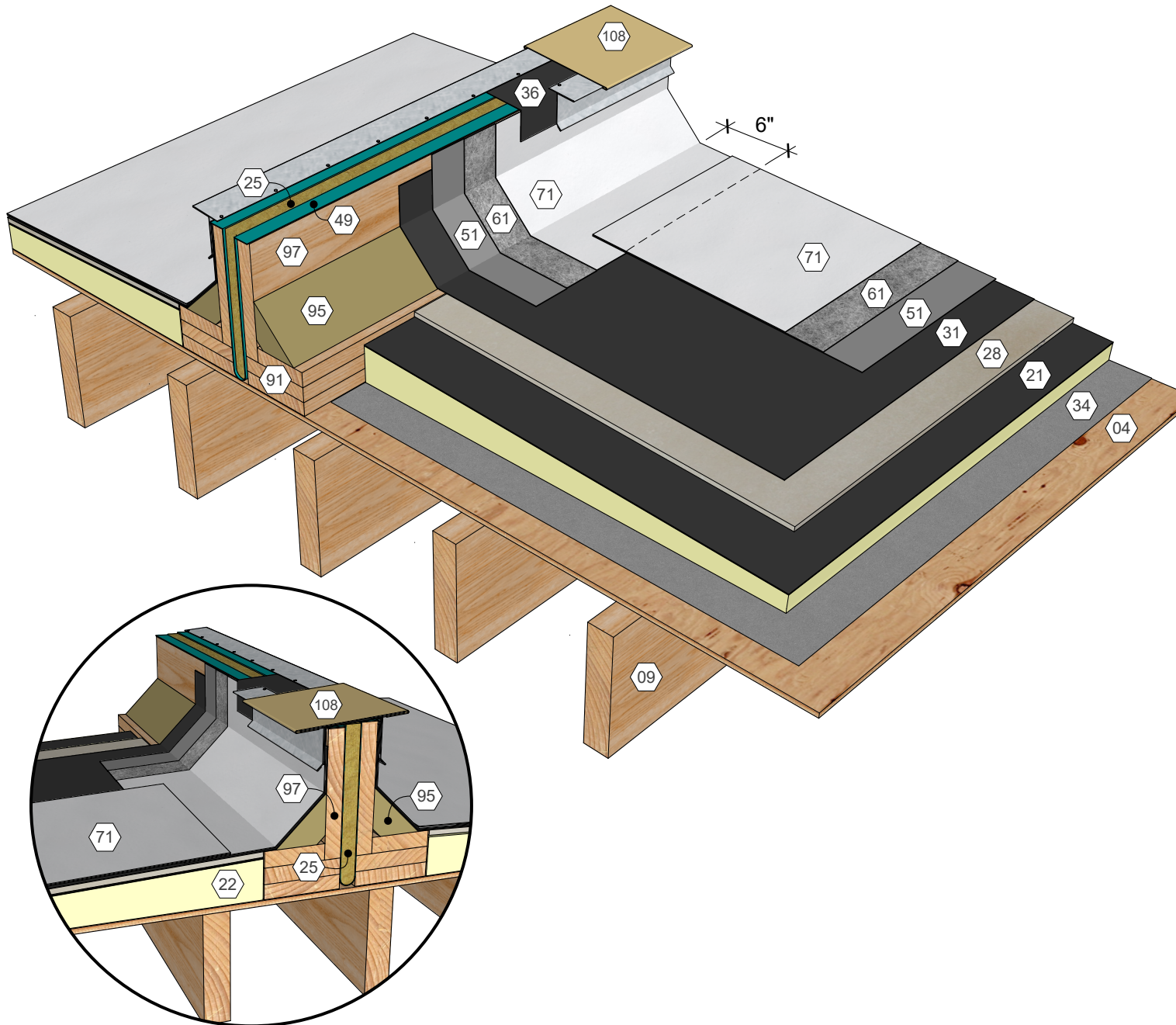


**KEY NOTES**

- 03 Precast Concrete Deck
- 21 Polyisocyanurate Insulation (Adhered)
- 25 Compressible Insulation
- 28 Cover Board (Adhered)
- 31 Approved Base Ply Sheet
- 36 Base Sheet Liner
- 49 Flexible Vapor Retarder Serving as Insulation Retainer
- 51 AlphaGuard MT/MTS Base Coat
- 61 AlphaGuard Glass Mat or Permafab
- 71 AlphaGuard MT/MTS Top Coat
- 91 Wood Blocking
- 95 Cant Strip
- 97 Wood Curb Assembly, Slope to One Side
- 108 Sheet Metal Expansion Joint Cover

AlphaGuard® MT/MTS Plus Expansion Joint Detail, Precast Concrete Deck  
 Detail 22083

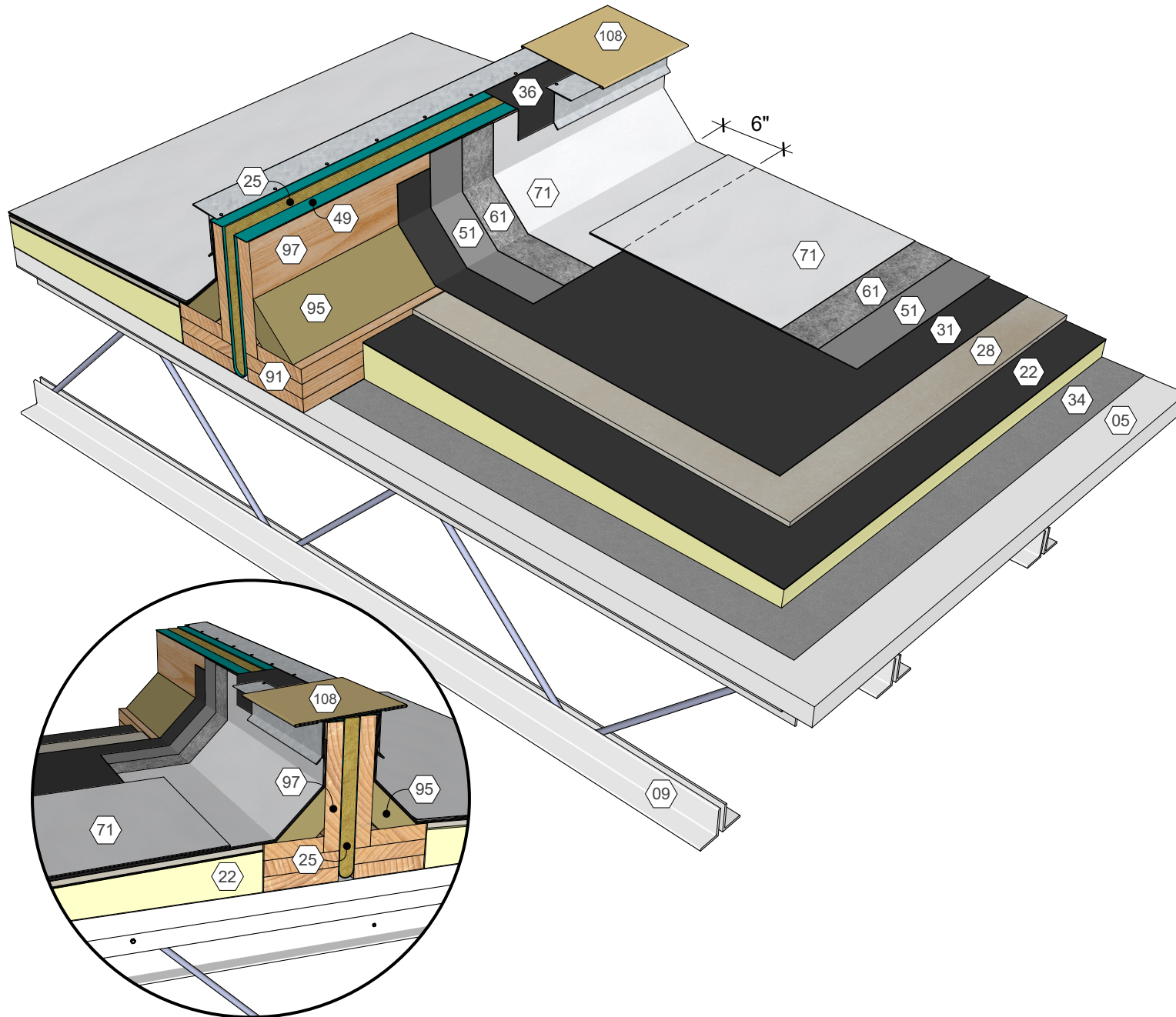




### KEY NOTES

- 04 Wood Deck
- 09 Roof Structure
- 21 Polyisocyanurate Insulation (Adhered)
- 25 Compressible Insulation
- 28 Cover Board (Adhered)
- 31 Approved Base Ply Sheet
- 34 Base Sheet (Fastened)
- 36 Base Sheet Liner
- 49 Flexible Vapor Retarder Serving as Insulation Retainer
- 51 AlphaGuard MT/MTS Base Coat
- 61 AlphaGuard Glass Mat or Permafab
- 71 AlphaGuard MT/MTS Top Coat
- 91 Wood Blocking
- 95 Cant Strip
- 97 Wood Curb Assembly, Slope to One Side
- 108 Sheet Metal Expansion Joint Cover

AlphaGuard® MT/MTS Plus Expansion Joint Detail, Wood Deck  
Detail 22084



### KEY NOTES

- 05 Gypsum Deck
- 09 Roof Structure
- 21 Polyisocyanurate Insulation (Adhered)
- 25 Compressible Insulation
- 28 Cover Board (Adhered)
- 31 Approved Base Ply Sheet
- 34 Base Sheet (Fastened)
- 36 Base Sheet Liner
- 49 Flexible Vapor Retarder Serving as Insulation Retainer
- 51 AlphaGuard MT/MTS Base Coat
- 61 AlphaGuard Glass Mat or Permafab
- 71 AlphaGuard MT/MTS Top Coat
- 91 Wood Blocking
- 95 Cant Strip
- 97 Wood Curb Assembly, Slope to One Side
- 108 Sheet Metal Expansion Joint Cover

AlphaGuard® MT/MTS Plus Expansion Joint Detail, Gypsum Deck  
Detail 22085